

# PDP webinar:

## connection and progress update

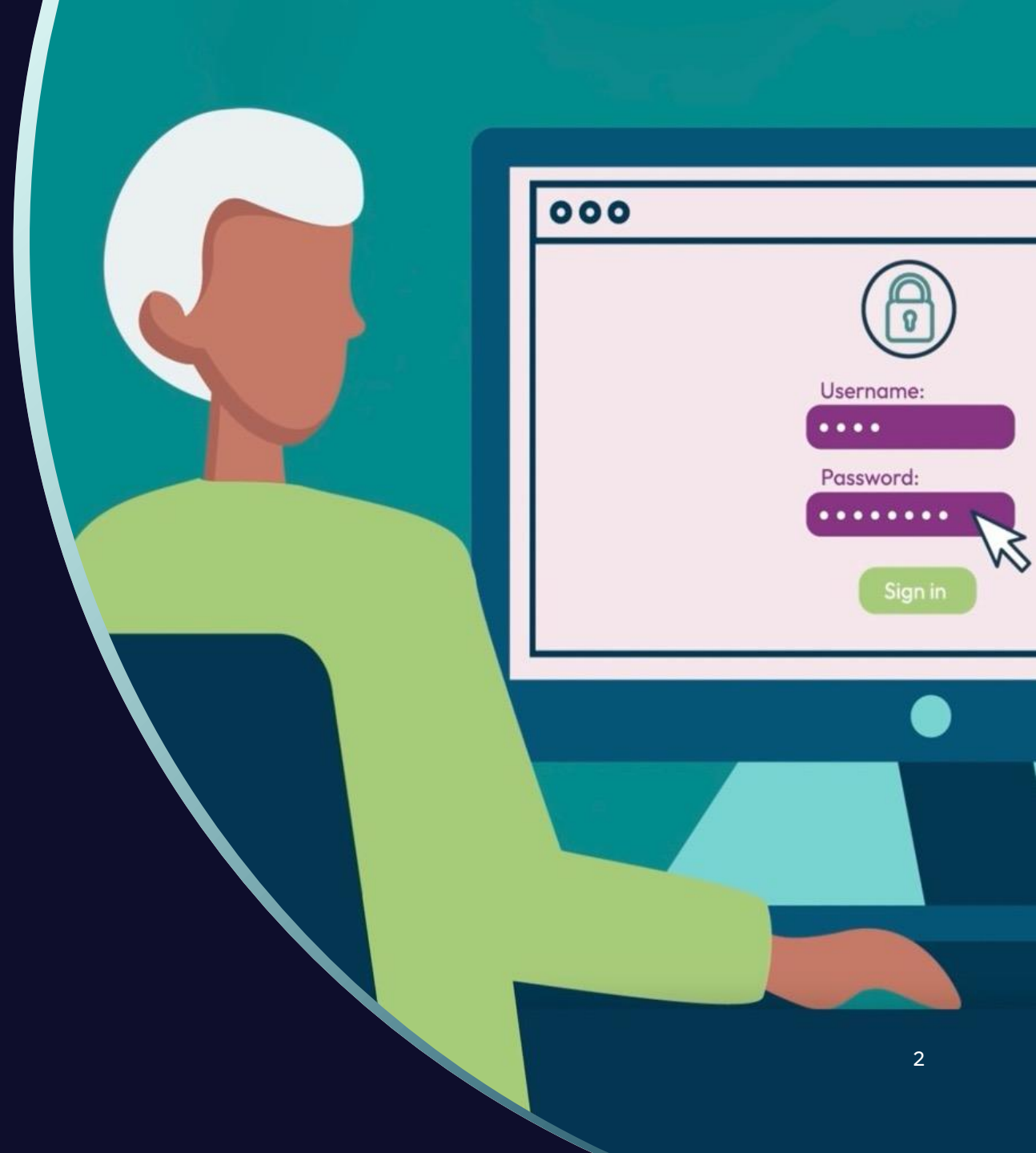


- This session will be recorded and published on our website
- please add any questions in the 'questions' box

April 2024

# Agenda

1. Introduction
2. PDP progress update
3. Department for Work and Pensions connection guidance: the staged timetable
4. The Pensions Regulator: regulators approach to compliance
5. Q&A

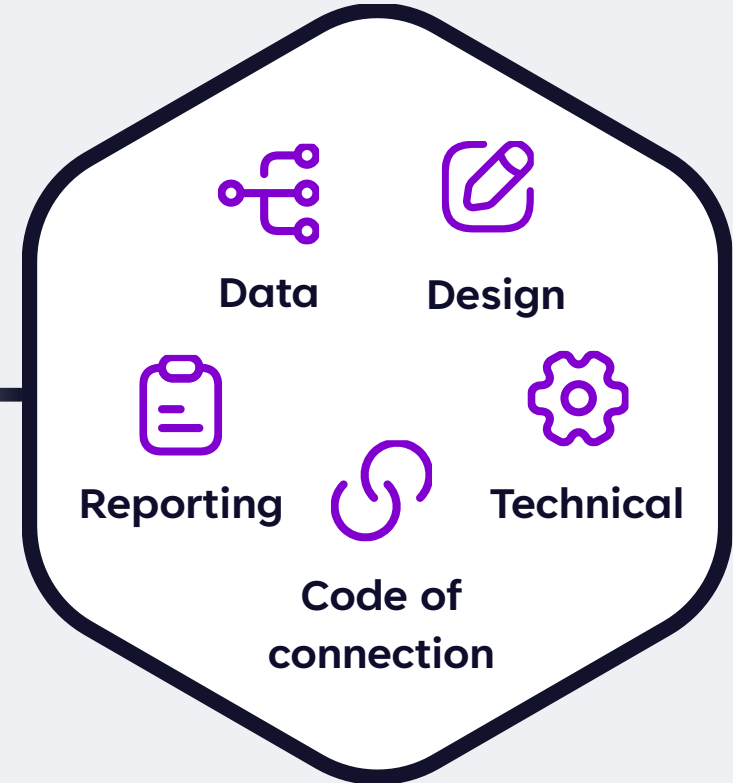


# Standards

Updated data standards shared with volunteer participants end of March and will be published in the coming weeks.

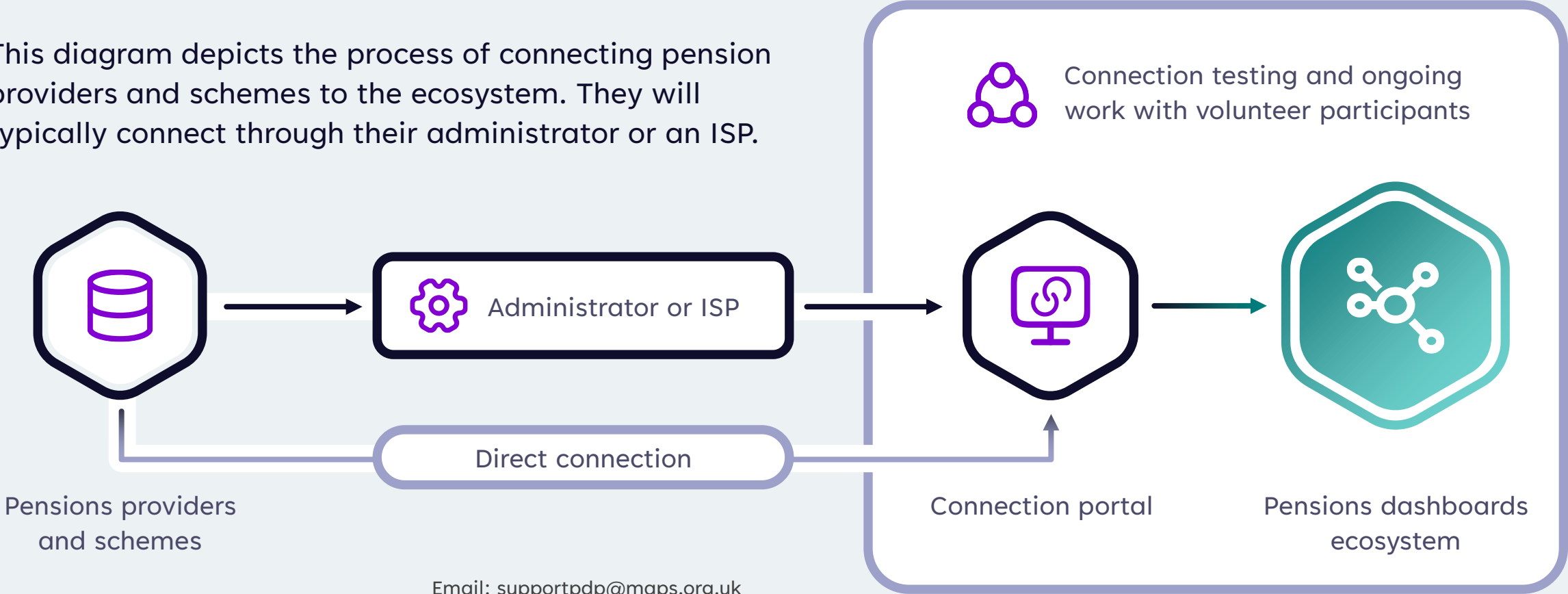
Continuing work on finalising updated versions of standards to support connection testing and wider industry staging.

Design standards (alongside FCA conduct rules) must be adhered to by dashboard service providers. Provision of a pensions dashboard service is a regulated activity.



# Preparing for connection

This diagram depicts the process of connecting pension providers and schemes to the ecosystem. They will typically connect through their administrator or an ISP.



# Industry engagement and speaking events



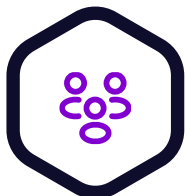
## External webinars

Participated in external webinars by Equisoft, PMI, WTW, and ITM, as well as running regular PDP webinars.



## External speaking engagements

Attended 17 events since November, including Professional Pensions Admin and Data Forum, PMI DB Conference, and Private and Public Pensions Summit (DG Publishing).



## PDP events

Covered topics ranging from reintroduction to pensions dashboards in October to technical aspects like central digital architecture and understanding AVCs and value data in recent sessions.

# Industry collaboration

Email: [supportpdp@maps.org.uk](mailto:supportpdp@maps.org.uk)



# Pensions dashboards advisory group

- advisory group replaces PDP's steering group
- existing members remain, 8 new members added
- members provide insights on dashboard delivery and operational topics
- new members represent various organisations in dashboard delivery



# Articles, blogs and newsletters







## User testing

Standards are fit for purpose

Launch 2024 user testing and planning group

User testing with real individuals

Influence criteria for 2024 dashboard launch

Ensure positive, safe user experience that meets user's needs

Inform the Secretary of State's decision making on criteria for DAP



Department  
for Work &  
Pensions

# Guidance on the staged timetable for connection

John Higgins – DWP Pensions Dashboards Policy Team

PDP webinar – 17 April 2024

# Guidance overview

## Background

- **Staging – DWP and its delivery partners (PDP, TPR, FCA) engaged extensively with industry on this phased approach to connecting pension schemes and providers to the digital architecture, which the timetable in guidance retains.**
- The Pensions Dashboards (Amendment) Regulations 2023 removed the staging profile and introduced a single connection deadline of 31 October 2026.
- DWP published guidance on **25 March 2024** containing a revised timetable which staggers the connection of 16 cohorts of large and medium schemes and providers to the digital architecture.

## Purpose

- Connecting schemes and providers in a staggered manner will help to smooth the process of connecting approximately 3,000 large and medium schemes and providers.
- Connecting the largest schemes and providers first will enable crucial user testing at scale to occur at pace.

## Key milestones from the timetable in guidance

Scheme type	Relevant members at reference date	Connect by
master trust schemes that provide money purchase benefits only	20,000 or more	30 April 2025
defined benefit schemes (other than public service pension schemes)	20,000 or more	31 May 2025
public service pension schemes	All sizes	31 October 2025
all other relevant occupational pension schemes	100-999	Monthly rolling 'connect by' dates between 31 January 2026 and 31 September 2026

# What the guidance means for industry

- The guidance sets out a timetable which is deliverable for the Programme and industry to connect to the digital architecture from April 2025.
- Although the timetable is not mandatory, schemes and providers are legally required to have regard to the guidance (which includes the timetable).
- **Following the timetable in guidance will reduce the risk of schemes and providers potentially not connecting by the deadline in legislation.**
- **Schemes and providers must continue to prepare for connection by ensuring their data is fit for purpose.**

# Having regard to your 'connect by' date

## Deciding when to connect

- Read DWP guidance and take it into account when making decisions around connection.
- Ensure you have access to all relevant information before making decisions.
- Develop and agree a practical delivery plan according to your scheme-specific situation.
- We expect schemes to adhere to the dates set out in this guidance. Not following the guidance could expose you to greater risk of not being able to comply with your dashboard duties.

## Not 'having regard' is a breach of law

- Trustees or scheme managers will need to be able to demonstrate, upon request, how you have had regard to the guidance on connection.
- Reasoning for decisions should be clearly considered and documented, including how relevant risks are identified, evaluated and managed.

**TPR's compliance & enforcement policy:**  
A pragmatic approach but robust where we see intentional non-compliance.

**Governance & Controls**  
It is important to have appropriate governance and controls in place to ensure work is progressing as planned.



**Download our checklist  
now to get started**

# Useful resources

[The Department for Work and Pensions guidance on connection: the staged timeline](#)

---



[DWP staged timetable guidance FAQs newsletter](#)

---



[The Department for Work and Pensions guidance on deferred connection](#)

---



[TPR Pensions dashboards: initial guidance](#)

---



[TPR Preparing to connect: checklist](#)

---



[Financial Conduct Authority Pensions Dashboards rules for pensions providers](#)

---



**Any questions?**



# Keep in touch

 @pensions-dashboards-programme

 @PensionsDboards

 Sign up to our newsletter via our website

Money and Pensions Service, Borough Hall,  
Cauldwell Street, Bedford MK42 9AP

**Email:** [supportpdp@maps.org.uk](mailto:supportpdp@maps.org.uk)

**Web:** [pensionsdashboardsprogramme.org.uk](https://pensionsdashboardsprogramme.org.uk)